



PUBLIC WORKS
LOS ANGELES COUNTY

FRANKLIN D. ROOSEVELT PARK REGIONAL STORMWATER CAPTURE PROJECT



April 3, 2017



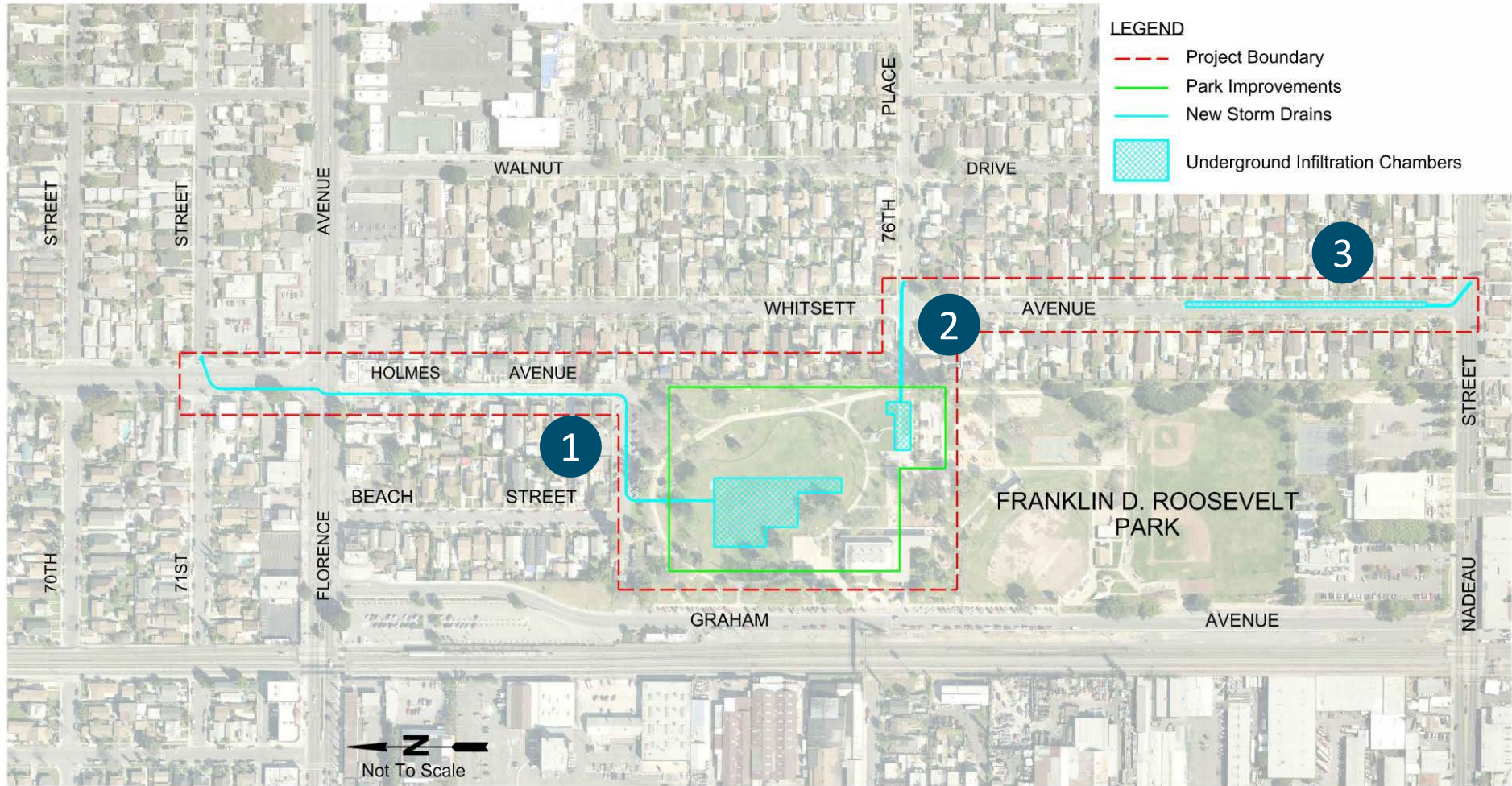
PRESENTATION OUTLINE

- Project Overview
- Funding
- Stakeholder Engagement
- Lessons Learned



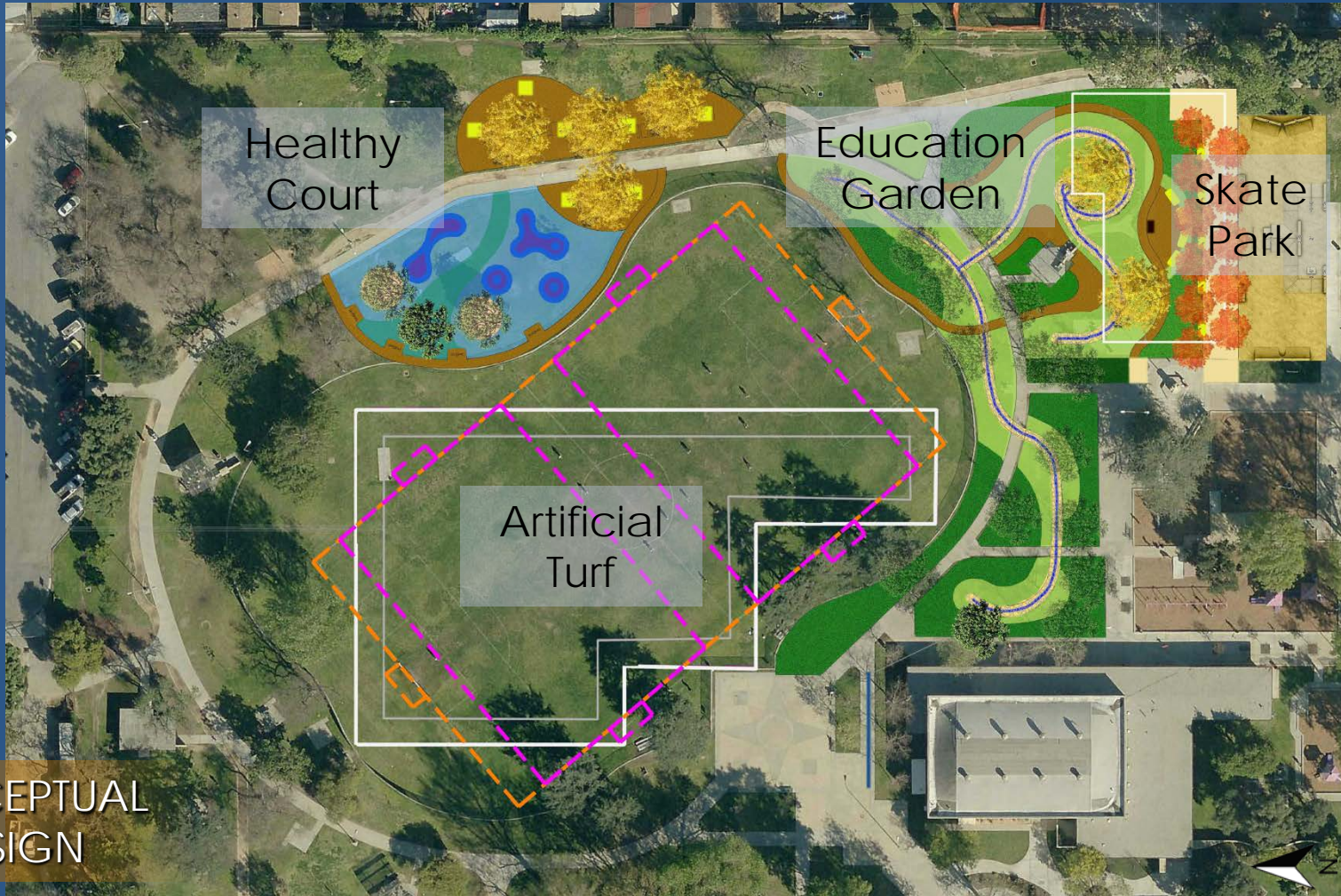


FRANKLIN D. ROOSEVELT PARK REGIONAL STORMWATER CAPTURE PROJECT





OVERVIEW OF PROPOSED PARK IMPROVEMENTS



CONCEPTUAL
DESIGN



PROPOSED IMPROVEMENTS



CONCEPTUAL
DESIGN

Existing Soccer Field



PROPOSED EDUCATION GARDEN



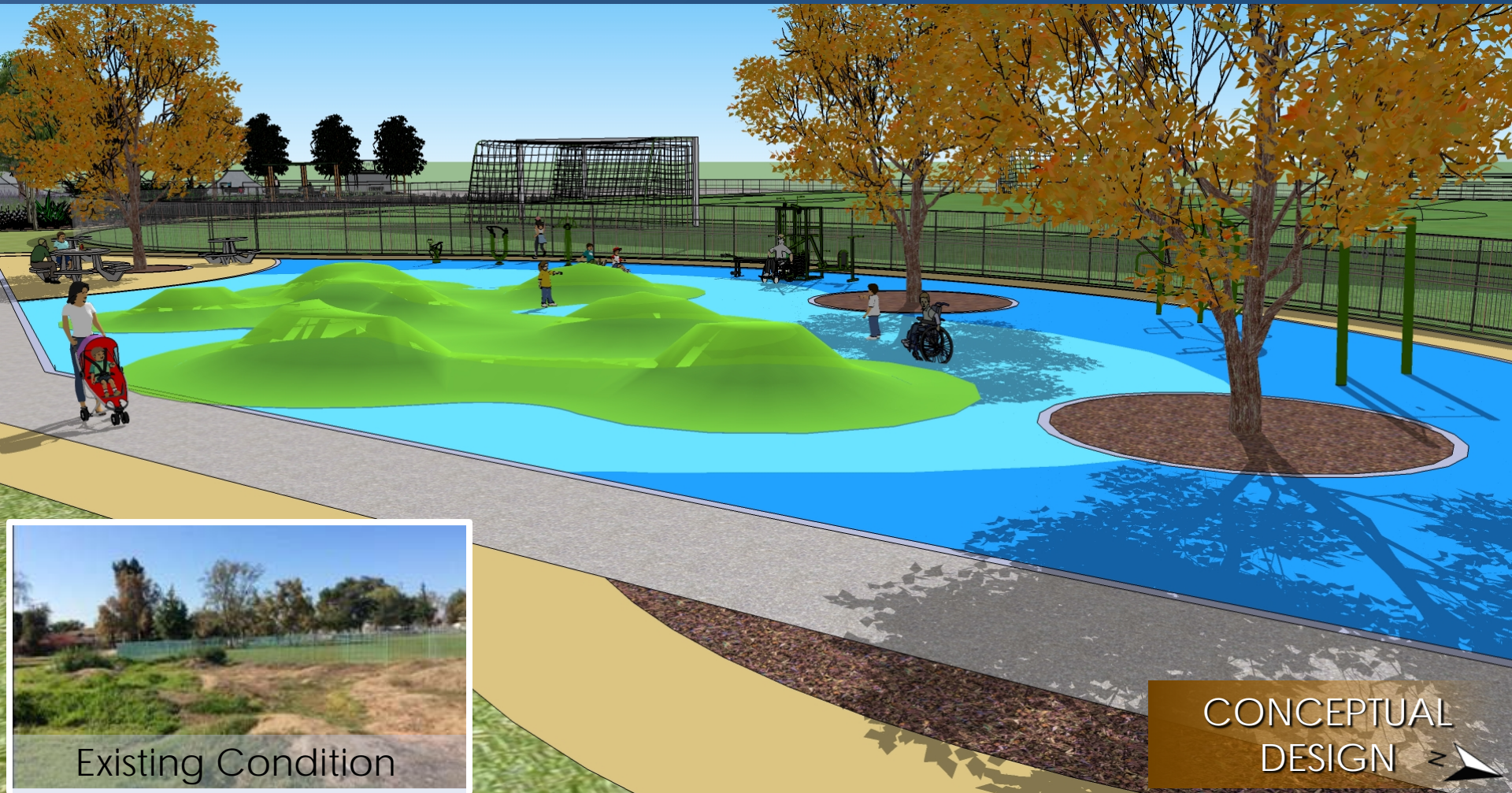
CONCEPTUAL
DESIGN



Existing Condition



PROPOSED HEALTHY COURT

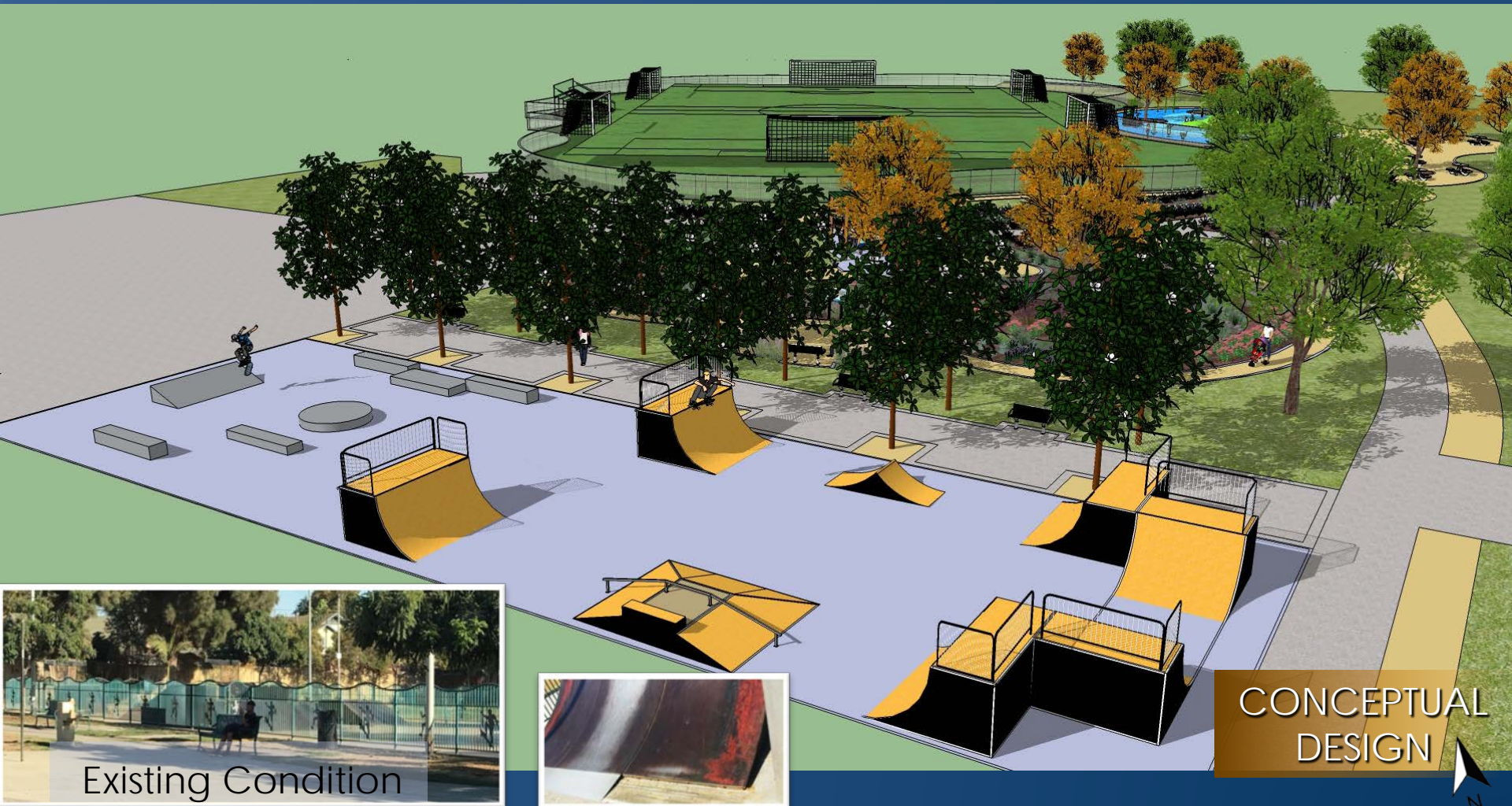


Existing Condition

CONCEPTUAL
DESIGN 



PROPOSED SKATE PARK RENOVATION



Existing Condition



CONCEPTUAL
DESIGN



FUNDING

Total Project Cost = \$13M

Design/PM/CEQA/Soft Costs - \$2.0M

Construction - \$11.0M

Sources of Funding = \$13M

Proposition 84 IRWMP Grant - \$2.0M

Capital Projects Budget - \$8.9M

County UA Stormwater Budget - \$2.0M (not including grant match)

Funding Process Take Aways

- Simultaneous vs. In Series – Planning, Budgeting, Early Implementation
- Flexible Phasing – Scale Up/Down Depending on Funding
- Reaching Out to Engage and Educate Fund Managers
- Even More Creative Partnerships and Funding Sources Needed For Future Projects



DECISION MAKER AND STAKEHOLDER ENGAGEMENT

Public Works

- Design Team Staff – Communicating Goals and Needs of Project
- Flood and Road Mtc Staff - Long Term O&M For Street and Underground Elements

County Family Departments

- Department of Parks and Recreation – Park Needs, Preferred Above Ground Improvements
- Chief Executive Office – Explain the Need For Funding
- LA County Board of Supervisors – Early Notification To Inform Our Elected Officials

Community Outreach

- Community Meetings Last Fall With Community Leaders, Park Patrons, and Residents

KEY ITEMS AND LESSONS LEARNED

- **Develop Project Team Early**
- **Pre-planning and Engineering Key To Get Grant Ready or Shovel Ready**
- **Phase Projects To Scale Up or Down Depending On Funding**
- **Continuous and Ongoing Coordination With All Stakeholders**



PUBLIC WORKS
LOS ANGELES COUNTY

www.FDRparkproject.com



PROJECT PARTNERS:



Los Angeles County Supervisor Mark Ridley-Thomas
County of Los Angeles Department of Parks and Recreation
California Department of Water Resources - Proposition 84 2015 Implementation Grant Program
Los Angeles County Flood Control District