

Caltrans Statewide TMDLs Cooperative Implementation Agreements Stormwater Finance Forum Funding Stormwater

April 3, 2017 in Alhambra, CA
April 5, 2017 in Oakland, CA

Constantine Kontaxis, PE
Watershed Manager



Caltrans NPDES Permit - Attachment IV (TMDLs)

- Permit Effective July 1, 2013
- Attachment IV was adopted May 20, 2014
- Caltrans – 12 Districts
- EPA Delegated Authority:
 - CA State Water Board
 - 9 Regional Water Boards





Caltrans TMDL Area

Current permit Caltrans is named in 84 TMDLs

- Over 4100 centerline miles of Caltrans highway
- 28% of State Highway
- 56,000 acres estimate total TMDL right-of-way
- 2/3 of the state drains to impaired water bodies, many do not currently have a TMDL
- TMDLs are likely to increase as we move forward
- Generally less than 2% of the watershed

Resources for Stormwater Compliance

FY
Governor's Enacted Budget
2660-007-0042

- Capital Outlay Support
- Maintenance
- Traffic Operations
- Legal

FY
**State Highway Operation
Protection Plan (SHOPP) (201.335)**
constrained need based on Ten Year
SHOPP

- FY - 1
- FY - 2
- FY - 3
- FY - 4

Capital Projects
STIP, SHOPP, and Local Assistance

- Construction BMPs
(Temporary)
- Design Pollution
Prevention (Permanent)
- Post Construction BMPs
(Permanent)
- Orders & Enforcement
Actions



Past vs. Present TMDL Requirements

(Result of collaboration : a new way of doing business)

Past

- **Prescriptive Individual Requirements**
(84 ways of doing business)
 - Basin Plan/Watershed-specific
 - CT Waste Load Allocations
 - Time lines varied (10 to 30+ yrs)
- **Three-pronged approach**
 - Retrofits (SHOPP & Capital Projects)
 - Institutional Controls
 - Public Education (DTC)
- **Unsustainable**
 - Everything, Everywhere
 - Prioritized High/Med/Low

Present

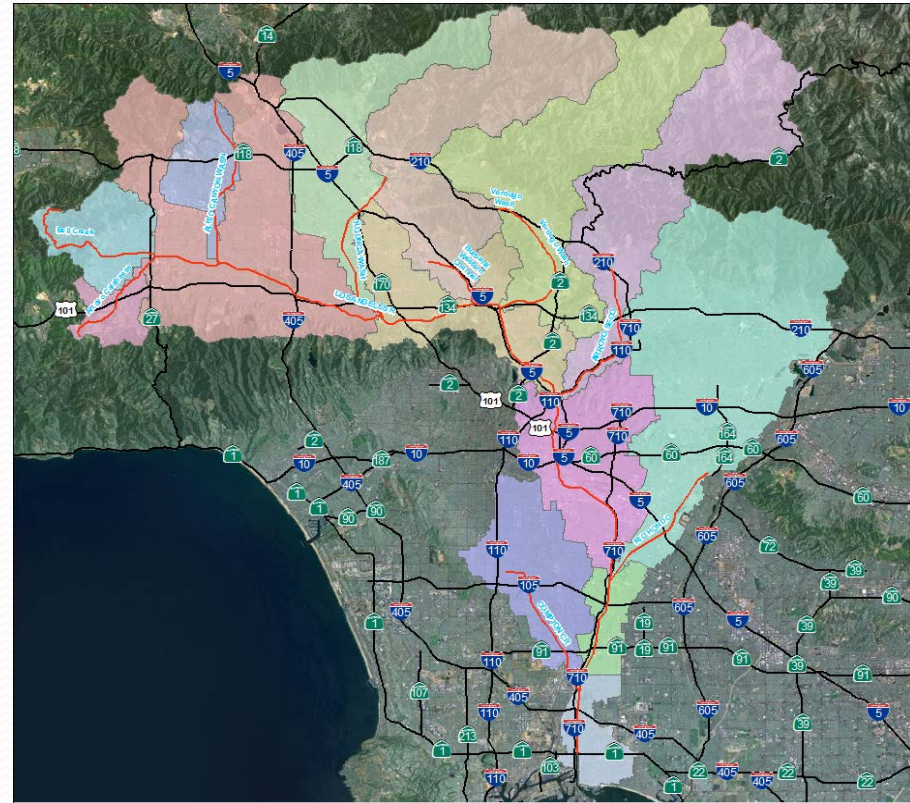
- **Model Practices by Pollutant**
 - Consistent Statewide Approach
 - 20 year timeline
- **Objective Compliance Measure**
 - Compliance Unit = Acre treated
 - Permit allows credit to begin at programming; Currently using contract complete.
- **Greatest WQ Benefit per \$**
 - Clear Performance Measures
- **Flexibility in Implementation**
 - SHOPP 335
 - Additional Post Treatment
 - Cooperative Implementation
 - Other



TMDL– Reach Prioritization

Reach Prioritization for Each Of Eight Pollutant Category

- Identify Reaches (In Most Watersheds)
- Reach Prioritization Scoring Matrix;
 - Impairment Status
 - CT Contributing Drainage Area
 - Proximity to Receiving Water
 - Community Environmental Health Impact



Attachment IV – Cooperative Implementation

- Collaboration with MS4s
 - Implementation activities
 - \$88,000 = 1 compliance unit (acre)
- Examples
 - Bay Area (Trash and Hg)
 - LA Watershed Programs (EWMP or WMP)
 - San Diego Watershed Program (WQIPs)
- Programmatic Agreements
 - SWRCB Grant
 - Third-Party Brokers



COOPERATIVE IMPLEMENTATION AGREEMENT

Selection Criteria

1) **Reach Priority list;**

The Reach Prioritization is posted on the State Board website at;

http://www.waterboards.ca.gov/water_issues/programs/stormwater/caltrans.shtml

What reach is the project located in and where on the priority list does it land?

2) **Number of pollutant categories treated (list TMDLs)**

Sediment/Nutrients/Mercury/Siltation/Turbidity

Metals/Toxics/Pesticides

Trash

Bacteria

Diazinon

Selenium

Temperature

Chloride



COOPERATIVE IMPLEMENTATION AGREEMENT

Selection Criteria

- 3) **a) What stage is the project in (Conceptual, Environmental Documents and Permits, Design?)**

Is the project conceptual? What environmental documents and permits been obtained? Is the project in design?

- b) Project Schedule and funding requested by local MS4)**

Include project schedule and total funding (show funds broken down by fiscal year).



COOPERATIVE IMPLEMENTATION AGREEMENT

Selection Criteria

4) Maintenance and Operation costs.

Will the maintenance and operation costs be solely borne by the MS4?

5) Number of Stakeholders benefitted from the project

How many local MS4s will benefit from the project?
Please list MS4s.

6) Amount of runoff from Caltrans Right of Way (if any)

How many acres of Caltrans right of way is being treated?



COOPERATIVE IMPLEMENTATION AGREEMENT

Selection Criteria

7) Lead agency; individual MS₄(s), JPA, stakeholder group?

Will CT be dealing with an individual MS₄, JPA, stakeholder group?

8) Type of BMP to be built. (Full capture, reuse, etc.)?

9) Number of acres treated

How many acres will be treated (BMP type, dry and wet weather flows)?

Agreement Template

- Caltrans has developed a “generic” Cooperative Implementation Agreement
- Will expedite review and approval time between Caltrans and Individual MS4s.

Fund Availability

- Fund availability (if any) will be determined March/April of each fiscal year.
- Looking to fund projects that meet criteria
- Funds are not an annual allocated amount but a part of Caltrans Stormwater operating expenses.
- Funds encumbered for projects need to be used within three years of executed Cooperative Implementation Agreement (CIA).

TIGER Grants and CMAQ Program

- Transportation Investment Generating Economic Recovery – TIGER Grants.
 - Discretionary Grant Program , provides a unique opportunity for the DOT to invest in road, rail, transit and port projects and promise to achieve national objectives.

<https://www.transportation.gov/tiger/about>

- Congestion Mitigation and Air Quality – CMAQ
 - The CMAQ program is continued in MAP-21 to provide flexible funding source to State and local governments for transportation projects and programs to help meet the requirements of the Clean Air Act.

<https://www.fhwa.dot.gov/map21/factsheets/cmaq.cfm>



Questions or Comments?

